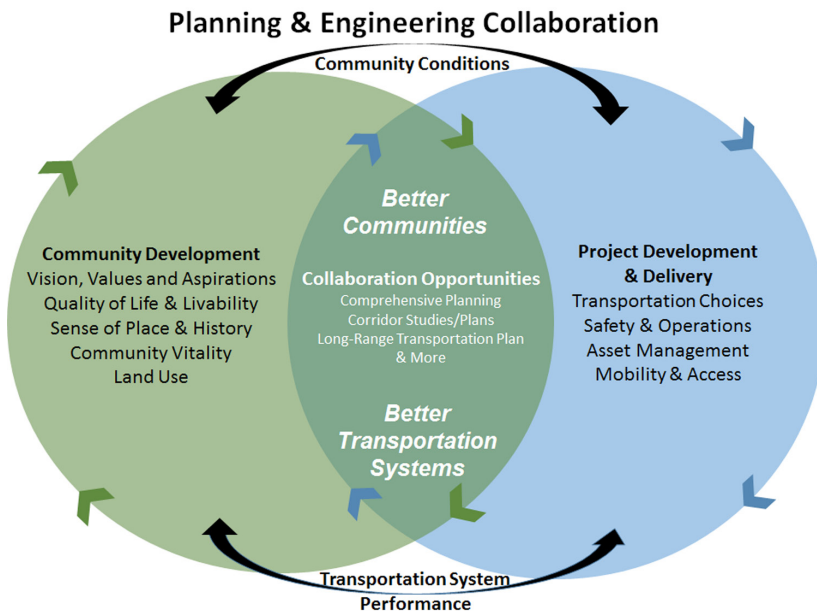


PennDOT Connects is a Commonwealth priority for improving transportation and communities. PennDOT Connects—Powered by Communities is a course organized around three major development phases: planning, programming, and project delivery. The specific collaboration opportunities for municipalities, PennDOT, and regional planning organizations will be reviewed for each phase. The course helps municipal officials understand how their input adds value during each phase.

PennDOT Connects—Powered by Communities will explain the PennDOT Connects policy, how it is being implemented, and how communities benefit and engage in the process. The training is based on an extensive course for PennDOT engineers and regional planners. Many participants recommended that this content be offered to municipalities as a key PennDOT Connects partner.



PennDOT Connects is about better communities and better transportation systems. These complementary goals are accomplished when communities, planning partners, and PennDOT work together. The graphic shows how municipal responsibilities for Community Development (left) should dovetail with PennDOT responsibilities (right) for Project Development & Delivery. The overlapping section (middle) lists a few of the collaboration opportunities to make this happen.

Course Objectives

The course will:

- Identify the roles and responsibilities of municipalities, including being a “conduit” to other community stakeholders.
- Describe the value of planning in relation to PennDOT Connects and the broader benefits.
- Explain the various opportunities for collaboration with PennDOT and the MPOs/RPOs through every phase of planning and project delivery — and the associated benefits.
- Explain how municipalities and PennDOT/MPOs/RPOs can partner to help ensure that transportation projects are developed in consideration of local priorities.

1

The Value of Planning

Community Planning Practices Comprehensive Planning

2

Program Development

Problem Identification and Assessment Proposal Identification Project Addition to TIP

3

Project Delivery

Preliminary Engineering and NEPA Requirements Final Design Construction Operations and Maintenance

Module Objectives

1: THE VALUE OF PLANNING

The following learning objectives describe what a participant should be able to do by the end of the Module 1 content:

- Explain why PennDOT Connects begins with the community and explain the benefits of community visioning and proactive approaches to shaping the future.
- Describe how PennDOT and the MPOs/RPOs can be involved and partner with the community planning process.
- Explain what constitutes community planning and how it does not have to be a comprehensive plan per se, but can be a clear set of community priorities/vision for the future.

2: PROGRAM DEVELOPMENT

The following learning objectives describe what a participant should be able to do by the end of the Module 2 content:

- Explain Program Development in the practical context of transportation planning and programming.
- Describe the purpose and value of the Project Information Form (PIF) and the community's role in helping to ensure its content, completeness, and accuracy.
- Identify how problems and opportunities get translated into candidate projects and, ultimately, how they are programmed.

(continued on next page)

PennDOT and its Metropolitan Planning Organization (MPO) and Rural Planning Organization (RPO) planning partners have a long-standing relationship jointly preparing transportation studies, plans, and programs to make the best transportation project investments possible with available resources.

This strategic alliance is now of even greater importance for PennDOT Connects implementation. Together, the MPO/RPO planning partners and PennDOT can effectively collaborate and communicate with municipalities — and other community stakeholders (e.g., transit operators, economic development agencies, etc.) — to improve transportation system performance and achieve more livable communities.

The collaborative effort of municipalities, MPO/RPO planning partners, and PennDOT is key to ensuring that opportunities to improve transportation and communities are realized.

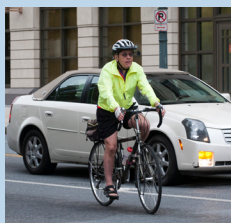
MPO/RPO contacts can be found at www.pennndot.gov/ProjectAndPrograms/Planning/Pages/MPO-and-RPO-Contact-List.aspx.



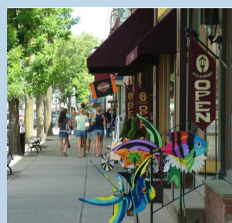
Mobility & Efficiency



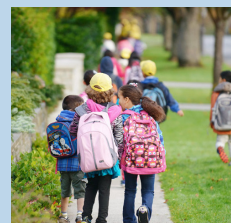
Multimodal Transportation



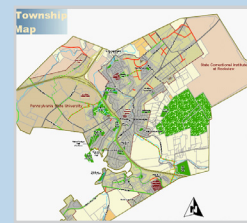
Safety



Community Character



Project Funding



Accommodating Growth

- Describe how to be involved in and leverage corridor studies, other transportation studies, and the long-range transportation plans of MPOs and RPOs (e.g., data and technical expertise of MPO and RPO staff).
- Explain how projects are funded.
- Describe the communication process and expectations for project decision making — with feedback to municipalities.
- Explain the purpose of the PennDOT Connects system.

3: PROJECT DELIVERY

The following learning objectives describe what a participant should be able to do by the end of the Module 3 content:

- Obtain a practical understanding of each phase of project delivery after a project has been programmed — preliminary engineering/NEPA (environmental)¹, final design, construction, maintenance, and operations.
- Identify when and how to collaborate through each of the project delivery phases.
- Describe the importance of providing feedback as an ongoing activity for both system and project performance, as well as how the community is better because of the improvements made.
- Understand that as a project progresses, collaboration opportunities still exist but are fewer, which emphasizes the importance of early collaboration.

¹ NEPA stands for the National Environmental Protection Act and refers to environmental reviews associated with project development.

Why you should attend

- To position your community to leverage PennDOT Connects by understanding its intent and implementation process
- To interact with PennDOT and regional planning staff about the specific collaboration opportunities and the partnership overall
- To learn about planning best practices around the Commonwealth

Who should attend

The training is generally targeted to those involved with municipal direction-setting and planning. Typically, this would include the following:

- Local managers
- Local planning and zoning staff
- Planning commission members
- Public works and road managers
- Township supervisors and borough council members

If you are interested in a course, contact your local planning partners:

www.penndot.gov/ProjectandPrograms/Planning/Pages/MPO-and-RPO-Contact-List.aspx

Visit paconnects.org today to register as a user. Then request a course through technical assistance.