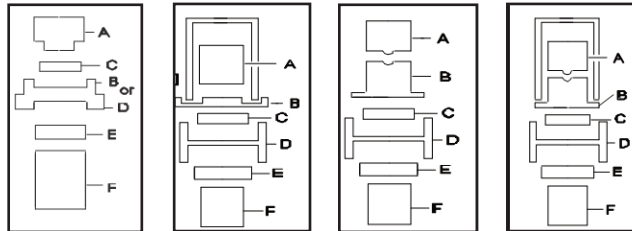


PILE HAMMER DATA

County: _____ S.R. & Sec.: _____ ECMS#: _____ S#: _____

TYPE OF HAMMER		Steam/Air Hammers		Diesel Hammers		Hydraulic Hammers		Vibratory
		Single Act.	Dbl./Dif. Act.	Single Act.	Dbl. Act.	Single Act.	Dbl. Act.	
Manufacturer / Model								
[A] Ram Energy	Maximum rated energy (ft. lb.) / Stroke (ft.) [1]							
	Minimum rated energy (ft. lb.) / Stroke (ft.)							
	Ram weight (kips)							
Double/ Dif. Acting Stm/Air	Area of piston (Dbl. Acting) (in ²)							
	Area of small piston (Dif. Acting)							
	Cylinder weight (kips)							
	Total net weight (kips)							
[B] [D]	Helmet weight (kips) (include striker plate) [5]							
[C] Cap Block	Material							
	Thickness (in.) / Area (in ²)							
	Modulus of elasticity (ksi) / Coefficient of restitution							
[E] Pile Cushion	Material [6]							
	Thickness (in.) / Area (in ²)							
	Modulus of elasticity (ksi) / Coefficient of restitution							
[F] Pile Size Data	Type / size [3]							
	Pile lengths to be driven (ft.)							
	As ordered ASTM specification, Fy (ksi)							
	Taper [4]							
	Factored resistance (kips)							
[G] BC-757	Pile tip (n/a, normal, heavy or conical) [2]							
	Splice(s) requested (Yes / No)							

- [1] Maximum energy & stroke at fuel input for which hammer is rated
- [2] Provide vendor catalog cut of tip
- [3] Size and weight of HP; butt diameter, wall thickness and trade name of shell pipe
- [4] Tip diameter, butt diameter and length of taper, e.g. 8-12-30
- [5] If drive head is not an integral part of the hammer it shall not be included in net weight
- [6] Pile cushion for concrete piles only



Contractor	Date	Contractor Contact & Phone Number
------------	------	-----------------------------------