





BICYCLE DRIVER'S TEST

- You have to stop at a stop sign when on a bike, even if there is no traffic.
 True False
- Two ways to make a left turn as a bicyclist are... a.) use a crosswalk like a pedestrian b.) look behind you signal, move to the left lane and behave like a car.
 True False
- A bicycle helmet could save your life in a crash.
 True False
- A bike is too big for you if you cannot touch the ground with both feet while straddling the crossbar.
 True False
- Match the rider's signal to the correct action.
 A.  B.  C.  D. 
 ___ Left ___ Right ___ Right ___ Stop
- It's OK to drive a bike in either direction on a one-way street.
 True False
- You should inspect your bike once a year to be sure it is in good working condition.
 True False

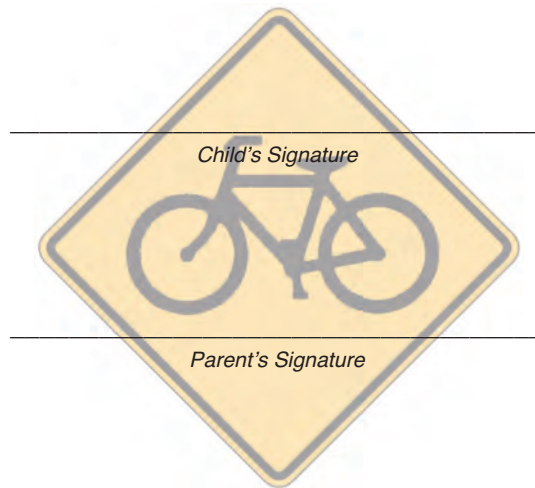
PARENT/CHILD CONTRACT

(Child) I promise to:

- Wear my helmet every time I ride my bike.
- Ride on the right, in the same direction as traffic.
- Follow all traffic signals and signs.
- Use correct hand signals.
- Look left, then right, then left again before entering the roadway and at all intersections.

(Parent) I promise to:

- Make sure your helmet and bike fit correctly
- Make sure your bike is working properly
- Teach you the correct hand signals
- Teach you the rules of the road
- Test your ability to ride safely in all situations



BICYCLE DRIVER'S TEST ANSWERS

- TRUE**
Bicyclist must obey all traffic signs and signals.
- TRUE**
There is no other safe way to do it.
- TRUE**
Many people survive crashes because of their helmets.
- TRUE**
You should be able to clear the crossbar by one inch.
- B** Left **C** Right **D** Right **A** Stop
- FALSE**
Bicyclists must drive with traffic, in the same direction as vehicles.
- FALSE**
You should check your bike once a month for cracks in the frame or bent tubes; tire pressure, tread, leaks, wear; wheels that spin freely without rubbing; spokes that are straight and tight; handlebars and seats that are tight and straight; and a chain with proper tightness.

PA Traffic and Injury Prevention Project
 Rosetree Corporate Center II
 1400 North Providence Rd.
 Suite 3007
 Media, PA 19063

(484)446-3008

Whether used for recreation or transportation, a bicycle is subject to PA Vehicle Code Sections 3501-3511 and 3336.



pennsylvania

DEPARTMENT OF TRANSPORTATION

PUB 636 (6-08)

©2008, Pennsylvania Department of Transportation

A Bicycle Is Not A Toy!



SAFE BICYCLE RULES OF THE ROAD

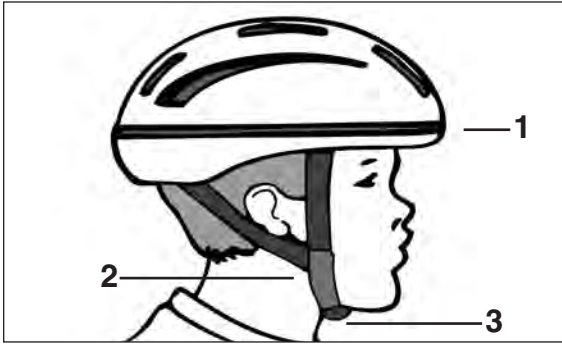
- Always wear a properly-fitted helmet.
- Ride on the right side of the road, with traffic.
- Obey all traffic signs and signals.
- Slow down when you approach an intersection. Look left, look right, look left again, then look over your shoulder before entering the intersection.
- Use proper hand signals when turning to communicate to drivers.
- Wear bright colored clothing to help drivers see you.
- Adjust the bike to fit you and keep it working smoothly.
- ALWAYS ASSUME THAT THE OTHER DRIVER DOES NOT SEE YOU.



You Are A Driver Not Just A Rider When Operating A Bicycle

Be Safe! Always Wear A CPSC, SNELL, ANSI and/or ASTM Approved Helmet

How to fit a helmet:



1. Place helmet level on the head. It should be snug and cover the forehead.
2. Adjust the helmet straps so when buckled it cannot move from side to side or back and forth.
3. There should be about one finger width of space between the chin and the chin strap.

How To Fit A Bike

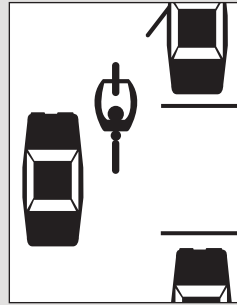
1. Lay your arm along the top bar with the elbow touching the seat. Your fingertips should just reach the handlebars.
2. Straddle the bike. There should be about one inch between the top bar and your crotch.
3. Adjust the seat so you can sit on the seat and balance on your toes.

Be Seen

Equip your bike with reflectors, a white headlight and a bell or horn. Bright-colored clothing and reflective material help bicyclist to be seen more easily.

Be Predictable

Drive with traffic on the right side of the road. Ride in a straight line whenever possible and ride with traffic. Keep to the right, but stay about a car-door width away from parked cars.

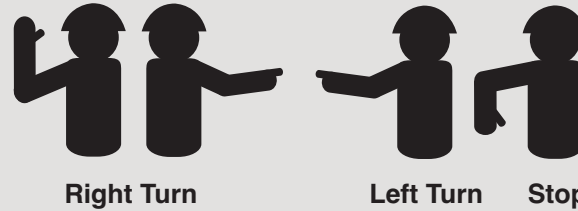


Obey All Traffic Signs And Signals

Always look left, then right, then left again before entering the roadway and at all intersections.

Use Hand Signals To Communicate

As viewed from behind the rider.



Bicycle Helmet Law

Pennsylvania law requires all children under 12 years of age to wear an approved bicycle helmet, meeting:

CPSC ANSI SNELL ASTM

or any other nationally recognized certification when operating or riding as a passenger on a pedalcycle or in a trailer towed by a pedalcycle.

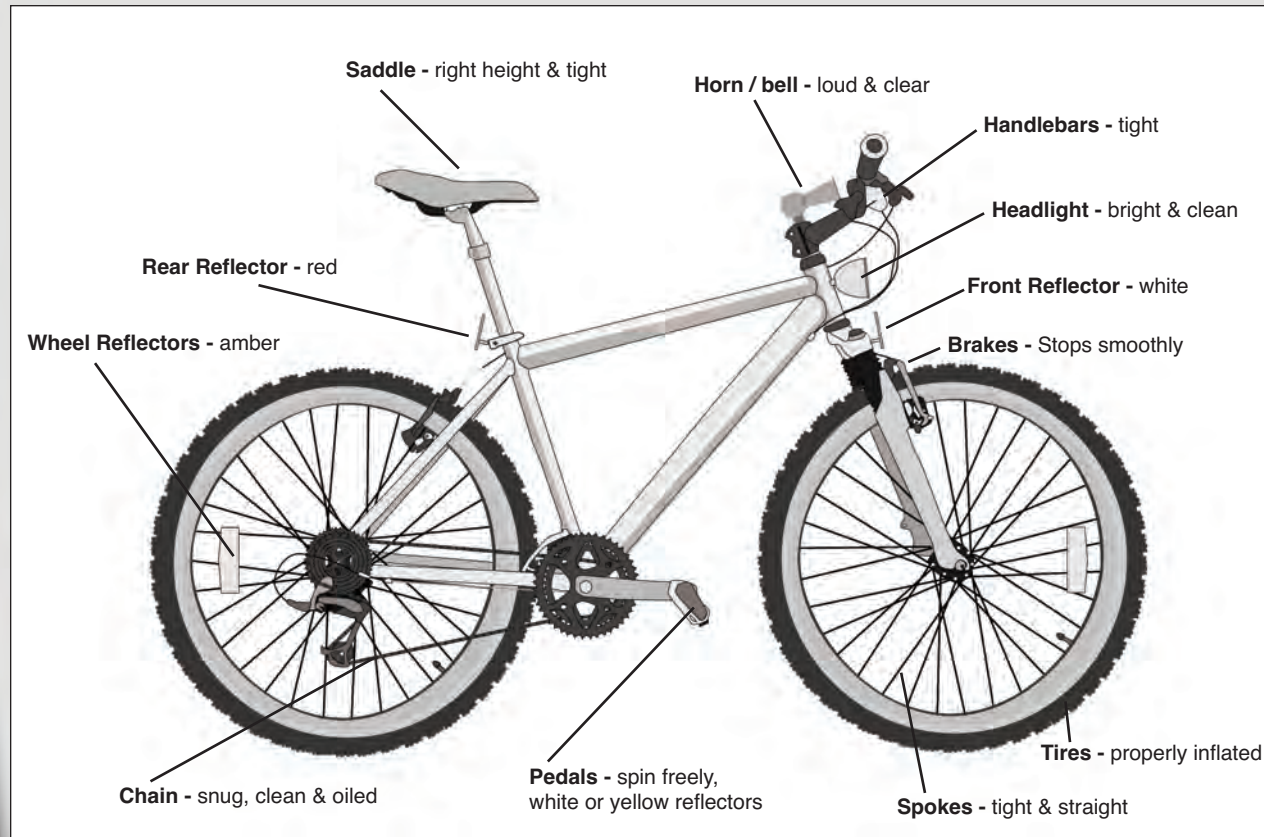
Safe Bicycle Rules Of The Road

- Always wear a properly fitted helmet.
- Ride on the right side of the road, with traffic.
- Obey all traffic signs and signals
- Slow down when you approach an intersection. Look left, look right, look left again, then look over your shoulder before entering the intersection.
- Use proper hand signals when turning to communicate with drivers.
- Wear bright colored clothing to help drivers see you.
- Adjust the bike to fit you and keep it working smoothly.
- ALWAYS ASSUME THAT THE OTHER DRIVER DOES NOT SEE YOU.

How To Get A Free Bicycle Driver's License

Carefully read and complete the following questions. To receive your free Bicycle Driver's License: Fill in the information on the license and attach a small photo. Mail your test and license information to:

**PA Traffic and Injury Prevention Project
Rosetree Corporate Center II
1400 North Providence Rd.
Suite 3007
Media, PA 19063
(484)446-3008**



BICYCLE DRIVER'S LICENSE	
	Name _____
	Address _____
	Make of Bike _____ Style/Model _____
	Serial # _____ Color _____
	Helmet _____
The owner of this bike has promised to safely maintain the bike and drive in a SAFE, courteous, visible and predictable manner.	
_____ Signature	
American Academy of Pediatrics (1-800-CAR-BELT)	

