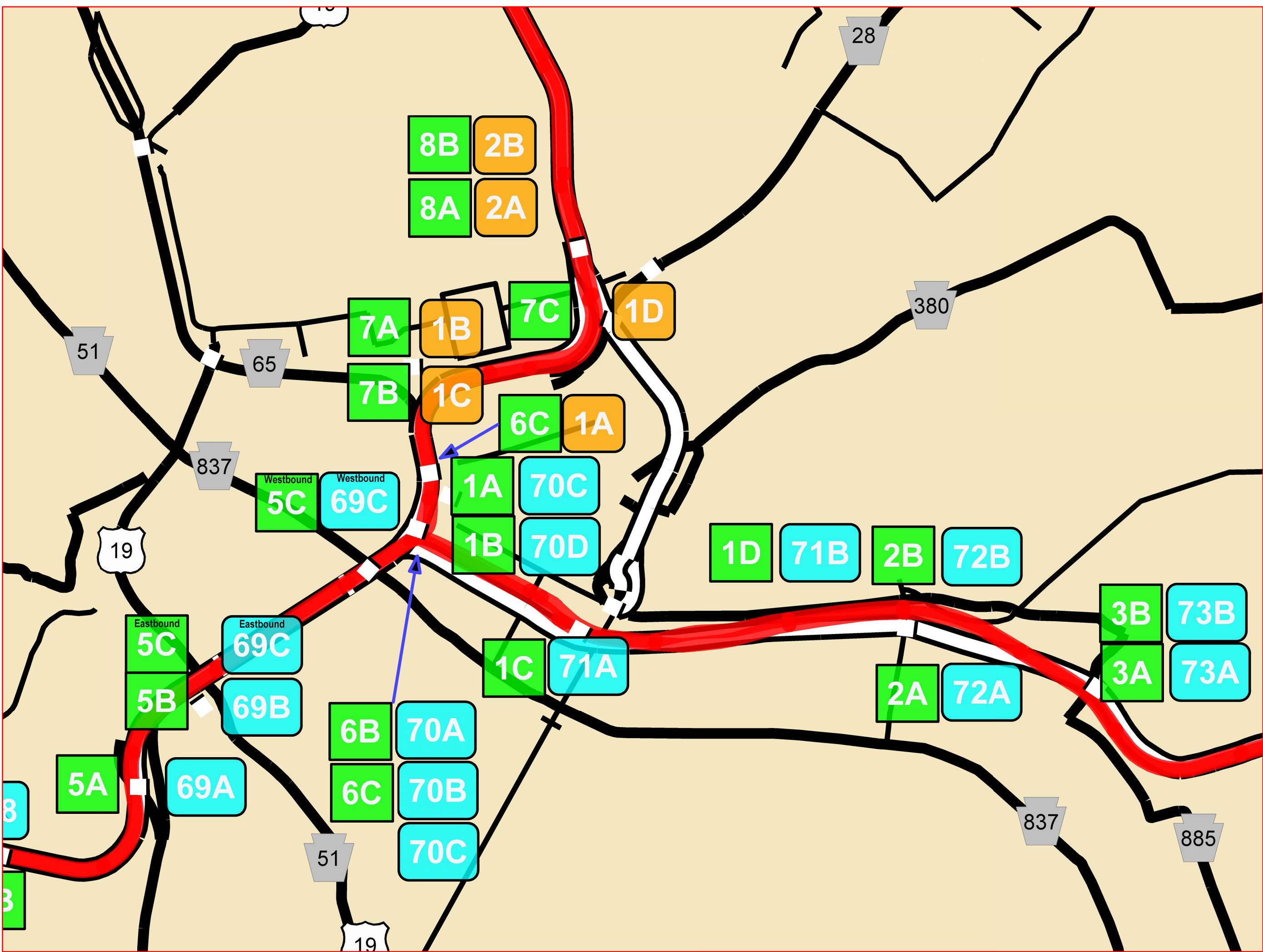
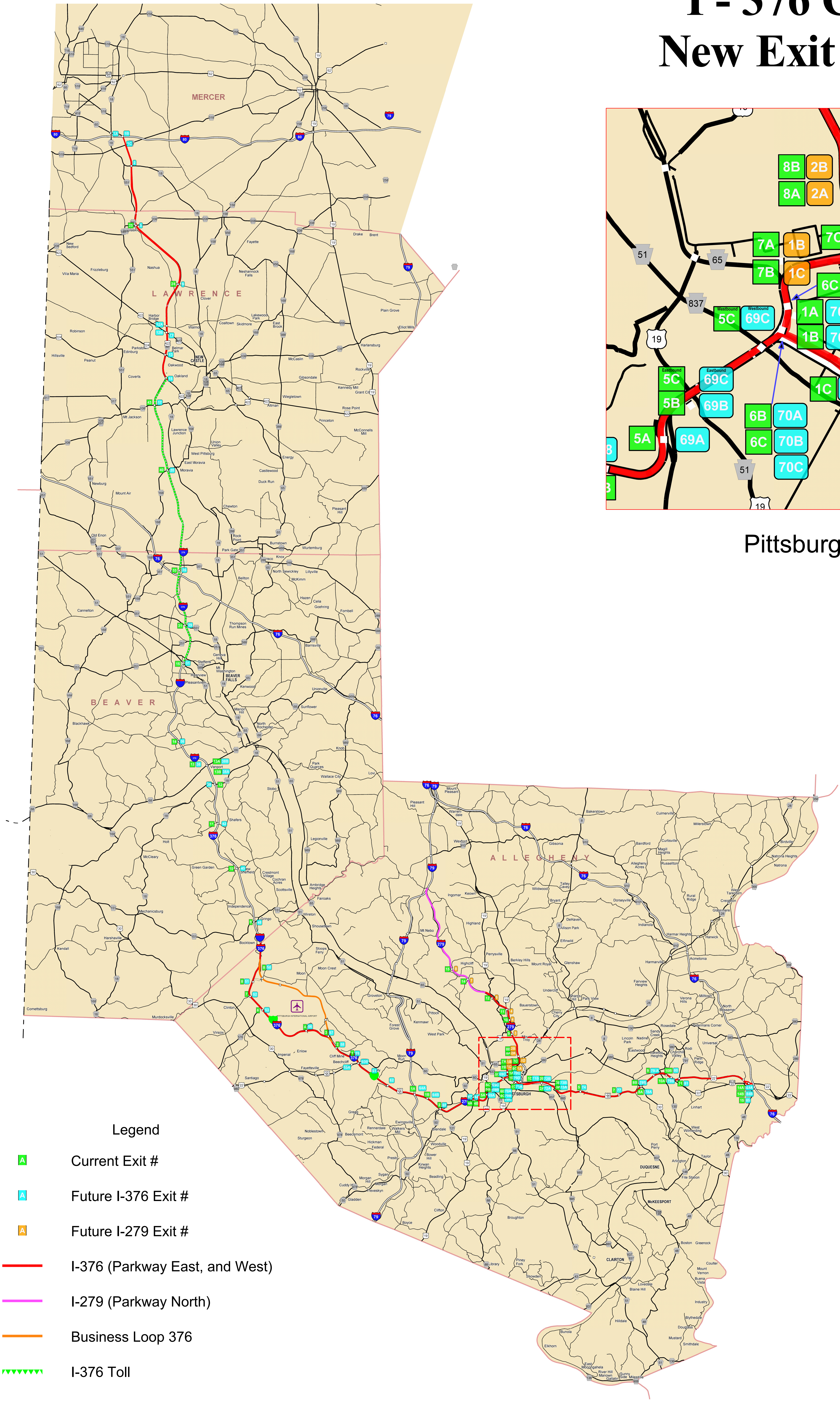


I - 376 Corridor

New Exit Numbers



Pittsburgh Interchanges



Legend

- A Current Exit #
- A Future I-376 Exit #
- A Future I-279 Exit #
- I-376 (Parkway East, and West)
- I-279 (Parkway North)
- Business Loop 376
- ▲▲▲▲▲ I-376 Toll

		I-376					
Exit Name	County	Old Route	Old Exit	New Route	New I-376 Exit	Route #	Status
Youngstown	Mercur	PA 80	1376	1A	1A	1A0 West	Approved
Mercur	Mercur	PA 80	1376	1B	1B	1A0 East	Approved
Mercur/West Middlesex (Eastbound)	Mercur	PA 80	1376	1C	1C	PA 18	Approved
West Middlesex	Mercur	PA 80	1376	2	2	PA 18	Approved
New Wilmington/Yukon	Lawrence	PA 80	25	1376	5	PA 308	Approved
Michael Road	Lawrence	PA 80	24	1376	9	To PA 18	Approved
Youngstown/Sampson St. (Westbound)	Lawrence	PA 80	1376	12	12	US 422 West/Business 422 East	Approved
Youngstown (Eastbound)	Lawrence	PA 80	1376	12A	12A	To US 422 West	Approved
Sampson Street (Eastbound)	Lawrence	PA 80	1376	12B	12B	Business 10 422 East	Approved
State Street/Plant, Ohio	Lawrence	PA 80	1376	13	13	US 244	Approved
Baker	Lawrence	PA 80	45	1376	15	US 422 East	Approved
Mc Jackson	Lawrence	PA 80	43	1376	17	PA 108	Approved
Monaca	Lawrence	PA 80	40	1376	20	PA 108	Approved
PA Turnpike/Hennings/Ohio	Beaver	PA 80	33	1376	28	176PA Turnpike	Approved
Beaver Falls	Beaver	PA 80	31	1376	29	PA 501 To PA 18	Approved
Chippewa	Beaver	PA 80	15	1376	31	PA 31	Approved
Boyleton	Beaver	PA 80	14	1376	38	PA 38	Approved
Robson/McDonald (Eastbound)	Beaver	PA 80	1376	39	39	PA 38	Approved
Midland (Westbound)	Beaver	PA 80	13 B	1376	38 A	PA 68 West	Approved
Beaver (Westbound)	Beaver	PA 80	13 A	1376	38 B	PA 68 East	Approved
Monaca/Shippensburg	Beaver	PA 80	12	1376	39	PA 18	Approved
Custer	Beaver	PA 80	11	1376	42	PA 18	Approved
Altoona	Beaver	PA 80	10	1376	45	PA 181	Approved
Hopewell	Beaver	PA 80	9	1376	48	PA 181	Approved
Moore (Eastbound)	Allegheny	PA 80	8	1376	50	Business Loop 376 East	Approved
Flaugherty Run Road/Moon (Westbound)	Allegheny	PA 80	8	1376	51	Business Loop 376 East	Approved
Clinton	Allegheny	PA 80	7	1376	52	To US 30	Approved
Airport	Allegheny	PA 80	6	1376	53	Total PA 376 To US 22	Approved
McClellan Road	Allegheny	PA 80	4	1376	56	Business Loop 376 West	Approved
Moon	Allegheny	PA 80	3	1376	57	Business Loop 376 West	Approved
Robinson Run Road	Allegheny	PA 80	2	1376	58	PA 60A	Approved
Robinson Towne Center Boulevard	Allegheny	PA 80	1	1376	59	US 220 West	Approved
Clinton	Allegheny	US 220B	1	1376	60A	US 220 West	Approved
Culver	Allegheny	US 220B	1	1376	60B	PA 60 South	Approved
Ty Ridge Road (Westbound)	Allegheny	US 220B	1	1376	61	PA 60A	Approved
Ridge Road (Eastbound)	Allegheny	US 220B	1	1376	61	PA 60A	Approved
Campbell Run Road (Westbound)	Allegheny	US 220B	1	1376	62	PA 60A	Approved
Elwyn/Washington	Allegheny	1279	1A	1376	64A	179	Approved
Rosslyn Farms (Westbound)	Allegheny	1279	1B	1376	64B	PA 50	Approved
Companietz/Lebanon (Westbound)	Allegheny	1279	2	1376	65	PA 50	Approved
Carnegie (Eastbound)	Allegheny	1279	2	1376	66	PA 50	Approved
Greenfield/Carnegie (Westbound)	Allegheny	1279	4A	1376	67	PA 121	Approved
Greentree / Mt. Lebanon (Eastbound)	Allegheny	1279	4A	1376	67	PA 121	Approved
Greenfield/Carnegie (Westbound)	Allegheny	1279	4B	1376	68	PA 121	Approved
Edencliffe Road (Westbound)	Allegheny	1279	5A	1376	69A	US 19 South	Approved
Uniontown (Eastbound)	Allegheny	1279	5B	1376	69B	US 19 South	Approved
West End (Eastbound)	Allegheny	1279	5C	1376	69C	US 19 South & PA 51 South	Approved
West End (Westbound)	Allegheny	1279	5C	1376	69C	US 19 South & PA 51 South	Approved
West of Allegheny Ave. Mellon Arena (Eastbound)	Allegheny	1279	6C	1376	69C	PA 837 North To PA 51	Approved
West of Allegheny Ave. Mellon Arena (Westbound)	Allegheny	1279	6C	1376	69C	PA 837 North To PA 51	Approved
PA Duquesne Blvd. Convention Center, Strip District (Eastbound)	Allegheny	1279	6C	1376	69C	PA 837 North To PA 51	Approved
North Side/North Shore (Fort Duquesne Bridge) (Westbound)	Allegheny	1279	1A	1376	70A	1279 North	Approved
North Shore (Eastbound)	Allegheny	1279	1A	1376	70A	1279 North	Approved
Robson Street (Westbound)	Allegheny	1376	1B	1376	70B	1279 North	Approved
Great Street	Allegheny	1376	1C	1376	70C	1279 North	Approved
Second Avenue (Westbound)	Allegheny	1376	1D	1376	70D	1279 North	Approved
Forbes Avenue (Eastbound)	Allegheny	1376	2A	1376	70A	To I-376 North	Approved
Rebound of the Allegheny River Bridge (Westbound)	Allegheny	1376	2B	1376	70B	PA 885 South	Approved
Greenwood (Westbound)	Allegheny	1376	3A	1376	70A	PA 885 South	Approved
Oakland (Westbound)	Allegheny	1376	3B	1376	70B	PA 885 North	Approved
Quincy Hill / Homestead	Allegheny	1376	5	1376	74	PA 885 North	Approved
Edgewood/Steelsville	Allegheny	1376	7	1376	77	US 30 East	Approved
Forest Hills (Eastbound)	Allegheny	1376	8A	1376	78A	US 30 East	Approved
Wilkesburg	Allegheny	1376	8B	1376	78B	US 30 East	Approved
Kensington Pike (Eastbound)	Allegheny	1376	9	1376	79A	PA 8 North	Approved
Chancell	Allegheny	1376	10A	1376	79B	PA 120	Approved
Monroeville (Eastbound)	Allegheny	1376	10B	1376	79B	Business US 22	Approved
Penn Hills	Allegheny	1376	11	1376	81	PA 781 North	Approved
Monroeville (Eastbound)	Allegheny	1376	14A	1376	84A	PA 48 South	Approved
Rum (Eastbound)	Allegheny	1376	14B	1376	84B	PA 48 South	Approved
PA Turnpike/Chico/Hennings (Eastbound)	Allegheny	1376	15	1279	85	176PA Turnpike	Approved

		I-279 Parkway North					
Exit Name	County	Old Route	Old Exit	New Route	New Exit	Route #	Status
PA Duquesne Blvd. Convention Center, Strip District (Southbound)	Allegheny	1279	6C	1279	6A	PA 837 North To PA 51	Approved
North Shore	Allegheny	1279	7A	1279	1B	PA 50 North	Approved
Ohio River Boulevard	Allegheny	1279	7B	1279	1C	To PA 28 North	Approved
Chesnut/East Ohio St. (Northbound)	Allegheny	1279	7C	1279	1D	To PA 28 North	Approved
Chesnut Bridge (Southbound)	Allegheny	1279	8A	1279	2A	To PA 28 North	Approved
East Street (Southbound)	Allegheny	1279	8B	1279	2B	To PA 28 North	Approved
Harold Street (Northbound)	Allegheny	1279	9	1279	3	To PA 28 North	Approved
Venture Street/McKnight Road & Evergreen Road (Southbound)	Allegheny	1279	10	1279	4	To PA 28 North	Approved
McKnight Road/Evergreen Road (Northbound)	Allegheny	1279	11	1279	5	US 19	Approved
Pennsylvania Avenue	Allegheny	1279	12	1279	6	US 19	Approved
Midland/West View	Allegheny	1279	14	1279	7	US 19	Approved
Camp Home Road	Allegheny	1279	15	1279	8	US 19	Approved

