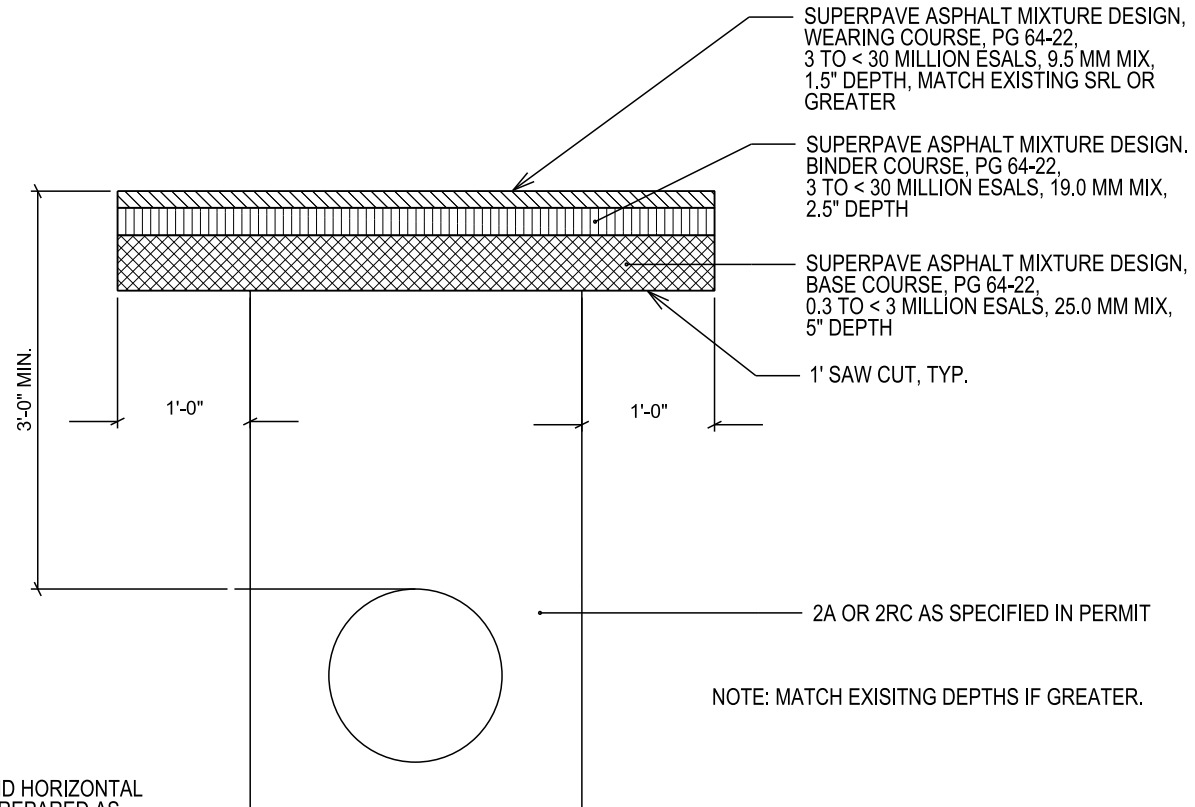


**FLEXIBLE PAVEMENT RESTORATION**  
**NOT TO SCALE**

**FIGURE 7-3**

HOT SEAL ALL EDGES  
 W/12" WIDE PG 64-22



SUPERPAVE ASPHALT MIXTURE DESIGN,  
 WEARING COURSE, PG 64-22,  
 3 TO < 30 MILLION ESALS, 9.5 MM MIX,  
 1.5" DEPTH, MATCH EXISTING SRL OR  
 GREATER

SUPERPAVE ASPHALT MIXTURE DESIGN,  
 BINDER COURSE, PG 64-22,  
 3 TO < 30 MILLION ESALS, 19.0 MM MIX,  
 2.5" DEPTH

SUPERPAVE ASPHALT MIXTURE DESIGN,  
 BASE COURSE, PG 64-22,  
 0.3 TO < 3 MILLION ESALS, 25.0 MM MIX,  
 5" DEPTH

1' SAW CUT, TYP.

2A OR 2RC AS SPECIFIED IN PERMIT

NOTE: MATCH EXISTING DEPTHS IF GREATER.

**COMMENTS**

1. EXPOSED VERTICAL AND HORIZONTAL SURFACES SHALL BE PREPARED AS PER PUB 408, SECT. 409.3(g).
2. MINIMUM 1' PAVEMENT CUTBACK, EXCAVATE OLD AND TEMPORARY MATERIAL RECOMPACT SUBBASE, TACK COAT ALL VERTICAL EDGES. INSTALL ONLY BASE COURSE AND BINDER COURSE IN ONE DAY.